



PORTABLE ULTRASOUND FOR MUSCULOSKELETAL IMAGING

Versana Active

Care with Confidence



gehealthcare.com

INTRODUCING Versana Active



Versana Active™ ultrasound system delivers the imaging capability of a console in a hand-carried, lightweight unit that enables you to provide musculoskeletal imaging to your patients, on premises or remote facilities. This reliable system brings the agility of a laptop unit with capability for attaching to a cart. Adaptable to cover a broad range of MSK exams, it is easy to carry to clinics and physician offices.

This high-quality yet affordable unit comes from the GE Healthcare legacy of MSK ultrasound imaging excellence. It combines design, workflow and features developed based on extensive research and testing to meet users' demanding requirements.

ADVANCED. CAPABLE. ADAPTABLE.
World-class ultrasound designed for peace of mind.

World-class
MSK image quality

Durability for
demanding usage
day after day

Smart
clinical applications

Intelligent automated
productivity tools
including **Whizz**
dynamic image tuning

Scan Assistant
to customize MSK
exam protocols

Clinical and product
education*

Flexible
financing options*

Expert service and
technical support

Access to a network
of Versana users

Versana Active is part of the Versana ultrasound family: complete solutions that help empower care without compromise, balancing capability, affordability, and reliability.

* Local educational offerings and financing options may vary according to regions. Please check with your local GE Healthcare representative.

A partner you can trust

Count on GE Healthcare for equipment and support to help you reach new levels of MSK imaging excellence



Dependable service and support for peace of mind

GE Healthcare delivers flexible, multi-year coverage to ensure long life, high uptime, efficient patient throughput, strong return on investment.

- Expert service engineers, always close by
- Simple maintenance, troubleshooting and repair
- InSite™ service technology for fast remote diagnostics* and software fixes
- Three-year warranty*

*Warranty and remote diagnostic offerings may vary by country or region. Please check with your local GE Healthcare representative.

Decades of GE Healthcare heritage at your service

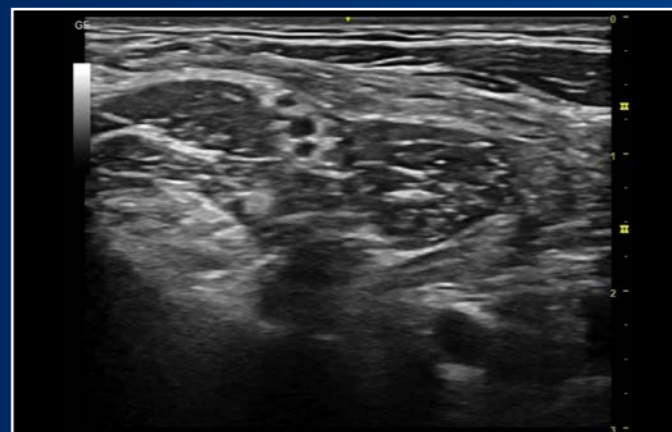
Versana Active links you to vast GE Healthcare MSK ultrasound experience. It's designed with you, your practice, and your patients in mind, to meet your clinical, workflow and connectivity needs.



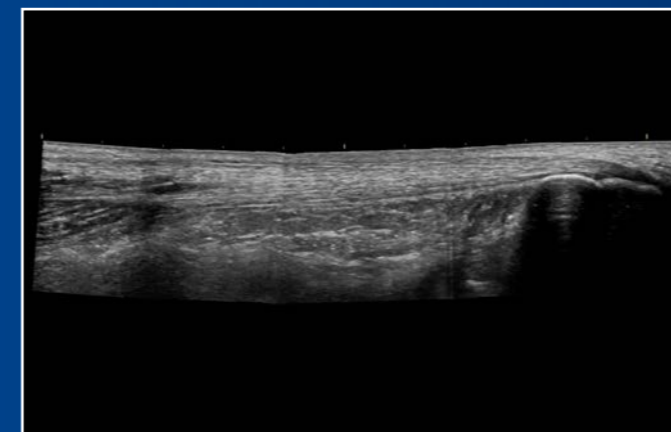
Advanced capability in a compact system

Versana Active MSK image quality ranks with the best in its class and persists for the life of the system. High spatial and contrast resolution help you clearly visualize anatomical structures and physiological function, and make confident decisions at the point of care.

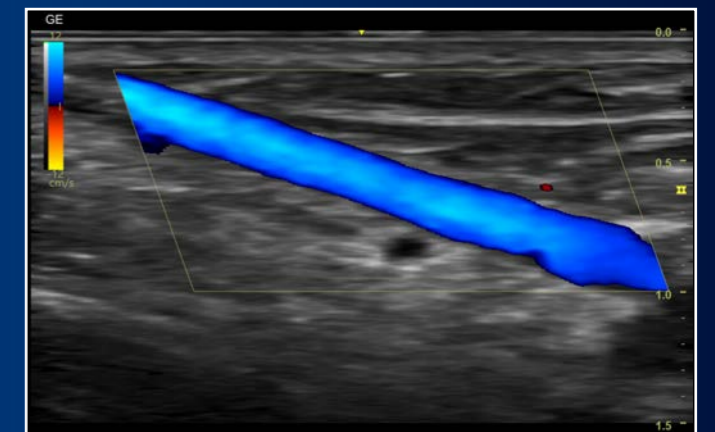
Whizz one-touch dynamic image constantly optimizes image quality as you scan, even as you move from one bone or region to another. This world-class yet affordable system also gives you proven functionalities from higher-end GE Healthcare ultrasound systems.



CrossXBeam and SRI-HD to define structure borders clearly.



Construct and view a static 2D image which is wider than the field of view of a given transducer with LOGIQ View™



Sensitive color Doppler to evaluate presence of vessels.

A complete solution

Advanced applications, educational support, attractive financing

Capable, adaptable system for comprehensive MSK scanning

The light, portable Versana Active makes exams comfortable for you and your patients, in clinic or off site. Scan at bedsides or in space-constrained rooms. This highly adaptable system lets you add a cart to create a full-featured console system and suit your practice needs. Fast boot-up lets you place the system in standby, then instantly scan the next patient who needs imaging. Clinical applications and automated tools simplify exams, streamline workflow, and enable fast, high-volume scanning.



Use an **L8-18i-RSi** "hockey stick" probe for ideal imaging of hands, feet and wrists



Use the **Follow-Up Tool** to easily compare current and prior images



Create custom MSK exam protocols and standardized workflow with **Scan Assistant**



Use **templates** to create custom reports to suit global or regional standards



Use **Whizz** dynamic image tuning to scan while the system seamlessly optimizes image quality



Easily add **voice comments** to exams



Use **Scan Coach** 3D animation, anatomic illustrations and reference images to find the correct scan plane



Upload images and reports to the cloud for consultation or sharing with patients

Flexible financing to enhance return on investment

Financing plans including monthly payments help you meet financial goals and grow your practice.

CHECK OUT THESE CONVENIENT FEATURES

Convenient carrying handle



High durability

Light (5 kg/11 lb) and slim (57 mm/2.3 in)

Wide range of probe offerings

Cart option to suit scanning preferences

Sharpen your skills and stay ahead of the curve

- Training and ultrasound education solutions including product and clinical tutorials
- My Trainer on-board help with system care, setup and operation
- Local face-to-face training and remote application support

Cloud access requires internet connection. Financing options and educational offerings vary from country to country. Please check with your local GE Healthcare representative.





An opportunity for growth

Versana ultrasound systems to serve you well today and set your course for the future.

Experience the strength of the GE Healthcare family

Your support team is fully trained, GE Healthcare qualified, deeply experienced, and nearby.

- Expert support during and after purchase
- In-depth staff product training
- Remote or on-site technical, clinical and network support

Customized solutions and path to growth

Versana Active can scale to suit your MSK imaging needs today and grow with you. Select a basic system and software. Then choose from optional upgrades as your practice advances.

Versana Club: Learn. Network. Share.

The Versana Club offers resources to help you expand your ultrasound knowledge and improve your practice.

- MSK Image-sharing with peers around the world
- Educational offerings
- Web-based video tutorials
- Information on Versana family service solutions and products
- Up-to-date content on ultrasound and patient care
- Notices of regional ultrasound events and other news
- Access to the broader family of GE Healthcare ultrasound user clubs

Register now at www.versanaclub.net.



VERSANA ACTIVE: CARE WITH CONFIDENCE
Advanced. Capable. Adaptable. World-class ultrasound designed for peace of mind.

Products mentioned in this material may be subject to government regulation and may not be available in all countries. Please check with your local Sales Representative. Shipment and the effective sale in certain countries can only occur if the product is approved. Final product configuration and features may differ from the ones represented here and may not be available in every country. Check with your local GE Healthcare representative for details.

Imagination at work

© 2019 General Electric Company – All rights reserved.

GE Healthcare reserves the right to make changes in specifications and features shown herein, or discontinue the product described at any time without notice or obligation. Contact your GE Healthcare representative for the most current information. GE, the GE Monogram, Versana Active, InSite, CrossXBeam, LOGIQ View and B-Flow are trademarks of General Electric Company. GE Healthcare, a division of General Electric Company. GE Medical Systems, Inc., doing business as GE Healthcare.

August 2019
JB70020XX

